



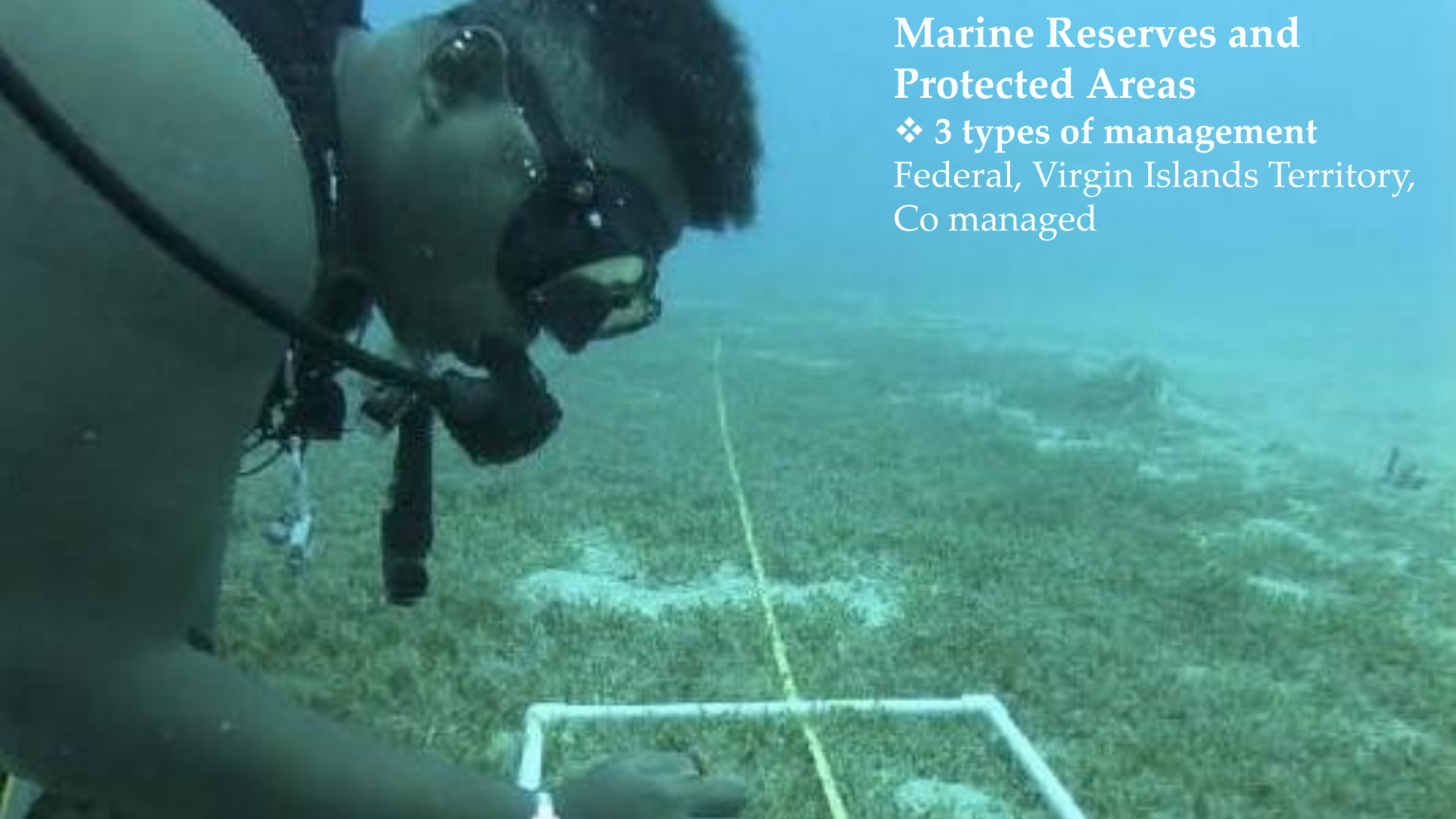
MARINE PROTECTED AREAS

OEAP Liaison Presentation

Nicole Greaux
St. Thomas/St. John

Marine Reserves and Protected Areas

❖ 3 types of management
Federal, Virgin Islands Territory,
Co managed



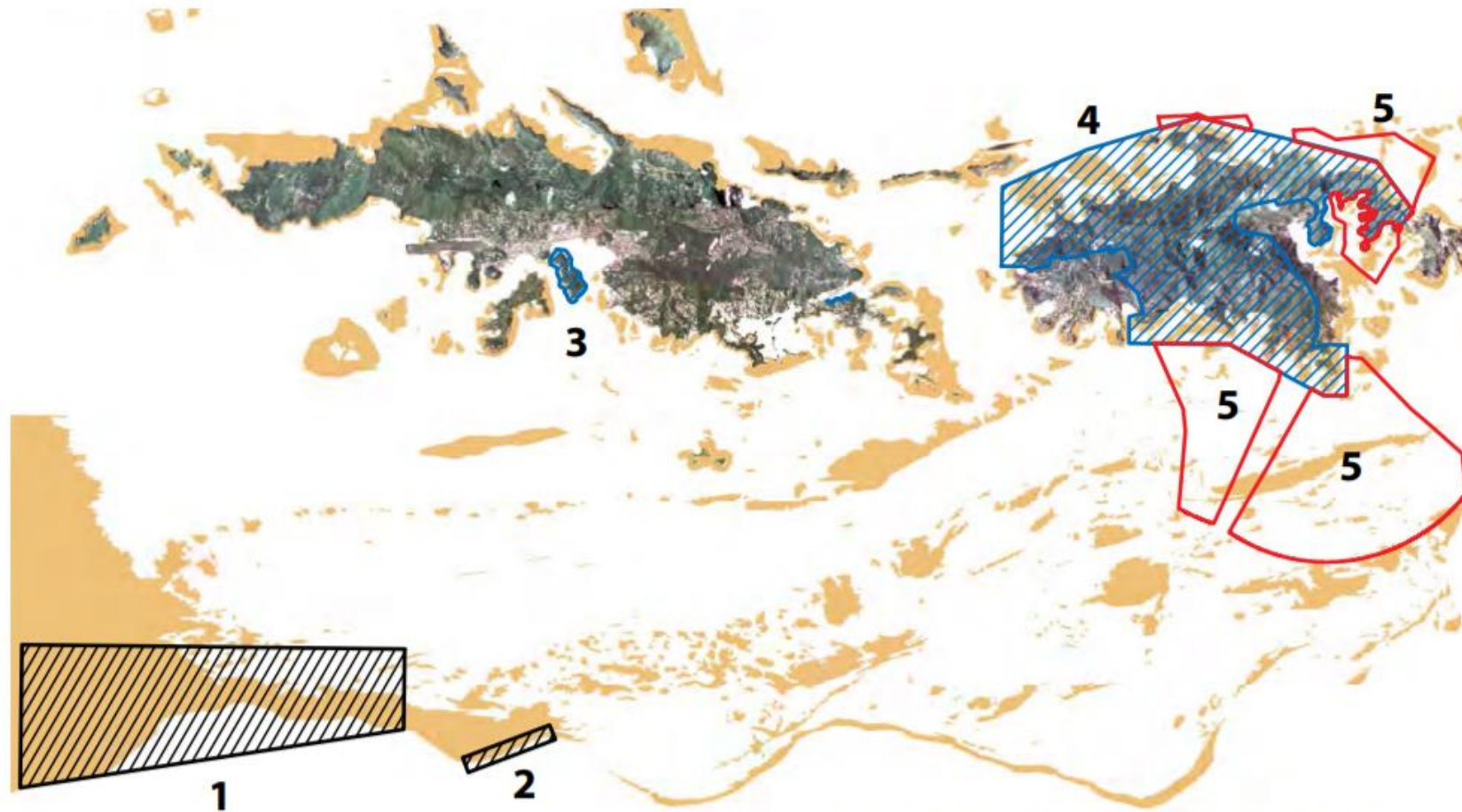
Examples

Federal	USVI Government
V.I. National Park*no commercial fishing allowed, Regulated fishing in specific areas	Cas Cay/ Mangrove Lagoon*bait fish only, no take inner lagoon
Coral Reef National Monument *no take	Compass Point Marine Reserve* no take
Hind Bank Marine Conservation District*no take	Frank Bay Marine Sanctuary(Small Pond)*no take
Grammanik Bank*highly migratory species only during 3 month closure	ST. Thomas East End Reserve *integrated areas of inclusion

Some protected areas have diverse regulations

Marine Protected Area	Island	Governing Institution	Establish Date	Level of Protection [†]	Management Plan
<i>National Monuments and National Parks</i>					
Virgin Islands National Park	St. John	NPS	1962	Zoned; Multiple-use w/ No-take	In revision
Virgin Islands Coral Reef NM	St. John	NPS	2001	Zoned; Multiple-use w/ No-take	No
Buck Island Reef NM	St. Croix	NPS	1961	No-take; Restricted Anchoring	Yes (2012)
Salt River National Historic Park and Ecological Preserve	St. Croix	NPS/VI-DPNR	1992	Fishing regulations in review	In revision
<i>Territorial Marine Parks</i>					
St. Croix East End Marine Park	St. Croix	VI-DPNR	2006	Zoned; Multiple-use w/ No-take	Yes
<i>Marine Sanctuary and Wildlife Reserve</i>					
St. Thomas East End Reserves	St. Thomas	VI-DPNR	2011	Zoned; Multiple-use w/ No-take	Yes
Cas Cay/Mangrove Lagoon MSWR	St. Thomas	VI-DPNR	1994	Zoned; Multiple-use w/ No-take	No
Compass Point Pond MSWR	St. Thomas	VI-DPNR	1992	Zoned; Multiple-use w/ No-take	No
St. James MSWR	St. Thomas	VI-DPNR	1994	Zoned; Multiple-use w/ No-take	No
Small Pond at Frank Bay MSWR	St. John	VI-DPNR	2000	No-take	No
Salt River MSWR	St. Croix	VI-DPNR	1995	No-take	No
<i>Fishery Closure Areas and Marine Conservation Districts</i>					
Red Hind Bank MCD	St. Thomas	NOAA-CFMC, VI-DPNR	1989	Year-round; No-take	Yes
Grammanik Bank	St. Thomas	NOAA-CFMC, VI-DPNR	2005	Seasonal Closure; No-take	Yes
Mutton Snapper	St. Croix	NOAA-CFMC, VI-DPNR	1993	Seasonal Closure; No-take	Yes
Lang Bank	St. Croix	NOAA-CFMC, VI-DPNR	1993	Seasonal Closure; No-take	Yes
<i>Areas of Particular Concern</i>					
Botany Bay APC	St. Thomas	VI-DPNR	1993	Multiple-Use	No
Magens Bay Watershed APC	St. Thomas	VI-DPNR	1993	Multiple-Use	No
St. Thomas Harbor and Waterfront APC	St. Thomas	VI-DPNR	1993	Multiple-Use	No
Mandahl Bay APC	St. Thomas	VI-DPNR	1993	Multiple-Use	Yes - Draft
Mangrove Lagoon/Benner Bay APC	St. Thomas	VI-DPNR	1993	Multiple-Use	No
Vessup Bay/East End APC	St. Thomas	VI-DPNR	1993	Multiple-Use	No

MPAs of the U.S. Virgin Islands



1. Red Hind Bank Marine Conservation District
2. Grammanik Bank Seasonal Closure
3. Hassel Island Historic District
4. Virgin Islands National Park
5. Virgin Islands Coral Reef National Monument

MPAs of the U.S. Virgin Islands



Territorial MPAs

- 5. Cas Cay/Mangrove Lagoon MSWR
- 7. St. James and Compass Point Pond MSWR
- 12. St. Thomas East End Reserve (5 and 7 combined)
- 13. Small Pond at Frank Bay MSWR

APCs

- 1. Botany Bay APC
- 2. Magens Bay APC
- 3. Mandahl Bay APC
- 4. St. Thomas Harbor APC

- 6. Mangrove Lagoon/Benner Bay APC
- 8. Vessup Bay/East End APC
- 9. Enighed Pond/Cruz Bay APC
- 10. Chocolate Hole/Great Cruz Bay APC
- 11. Coral Bay APC

St. Thomas East End Reserves (STEER)

- In August 2020, DPNR-CZM took on a NOAA Coastal Management Fellow to take lead on completing a 2-year update of the 2011 STEER Management Plan document. This process includes:
 - Conducting STEER Key Informant Interviews
 - A Management Plan Update Workshop Series
 - Building out a STEER Management Council
 - Producing an updated 2022 STEER Management Plan Document
- In June 2021, DPNR- CZM and FW hosted two SEAS Island Alliance Interns to conduct seagrass and algae surveys within Benner Bay and Mangrove Lagoon.
 - The purpose of this project was to better understand the seagrass and algae species present with the two bays.
- Currently, DPNR-CZM is conducting a STEER Public Use Survey
 - The results of the survey will update DPNR's understanding of areas for activity in STEER and help advise the placement of informative signage around the reserves.



Some areas of the STEER







THANK YOU

